

ZWIFT RACING LEAGUE 2024/25

ROUND 3

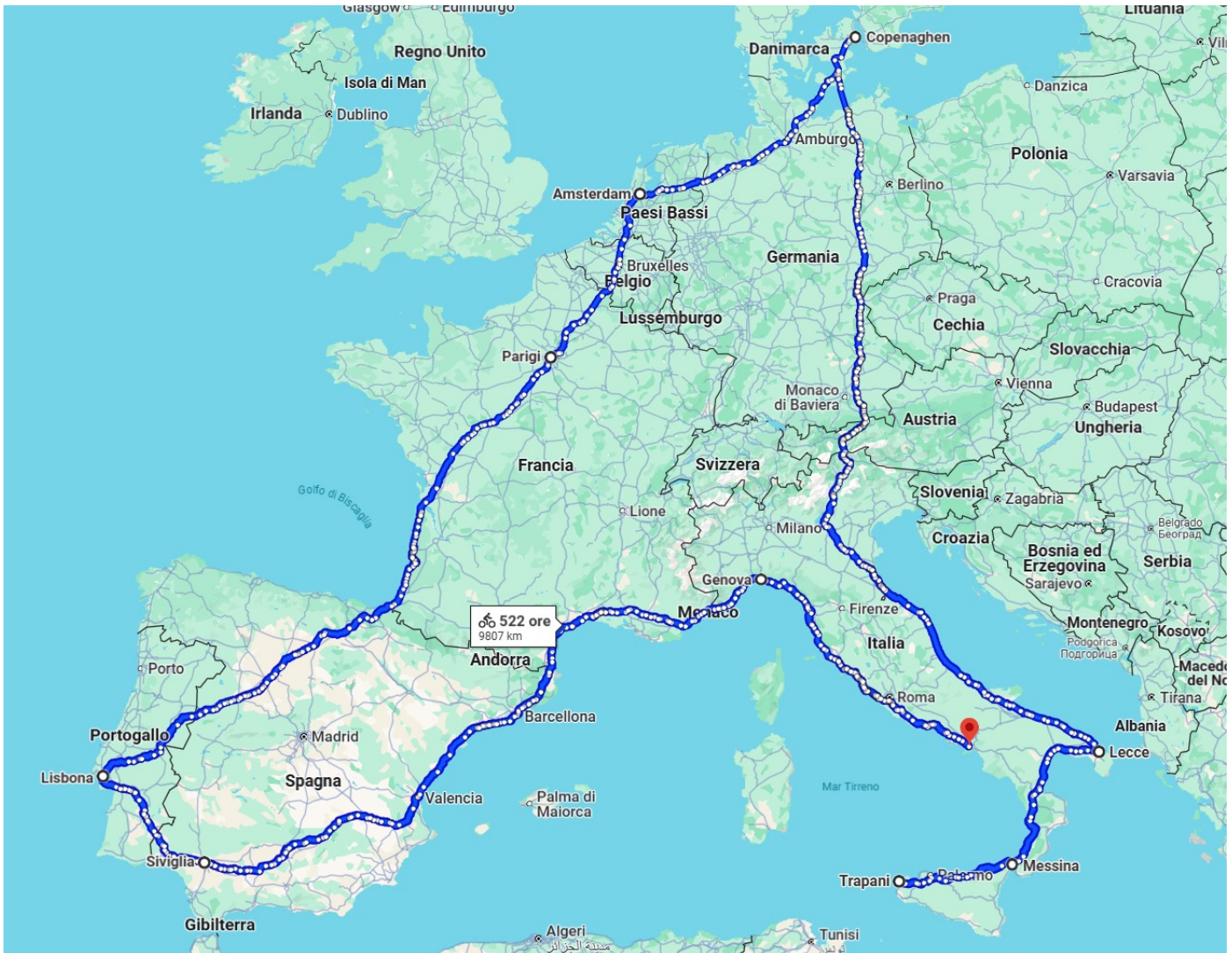


12 INOX SUBTEAMS

Team	ZRL Division
<i>ELITE</i>	EMEA-E Northern A1
<i>LIONS</i>	EMEA-E Northern A1
<i>GHOST</i>	EMEA-E Central B1
<i>DEV</i>	EMEA-E Northern B2
<i>NIGHTMARE</i>	EMEA-E Central (East) B2
<i>MONSTER</i>	EMEA-E Western (South) B2
<i>MADNESS</i>	EMEA-E Northern B3
<i>PRO</i>	EMEA-E Northern C1
<i>AAB</i>	EMEA-E Western (South) C1
<i>FIRE</i>	EMEA-E Central (East) C2
<i>WARRIORS</i>	EMEA-E Northern C2
<i>LOL</i>	EMEA-E Northern D1

KM TRAVELLED BY INOX

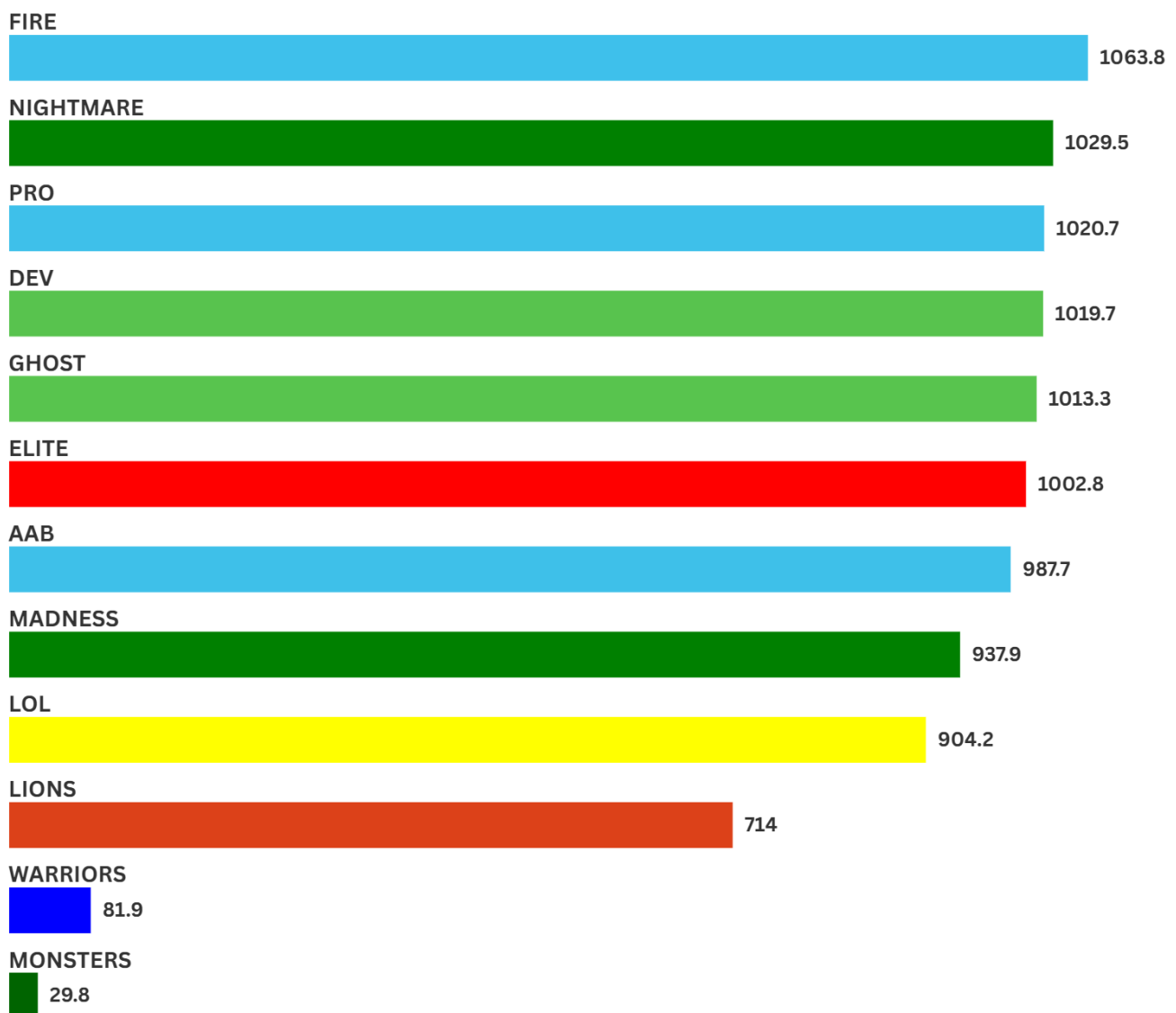
9805 KM



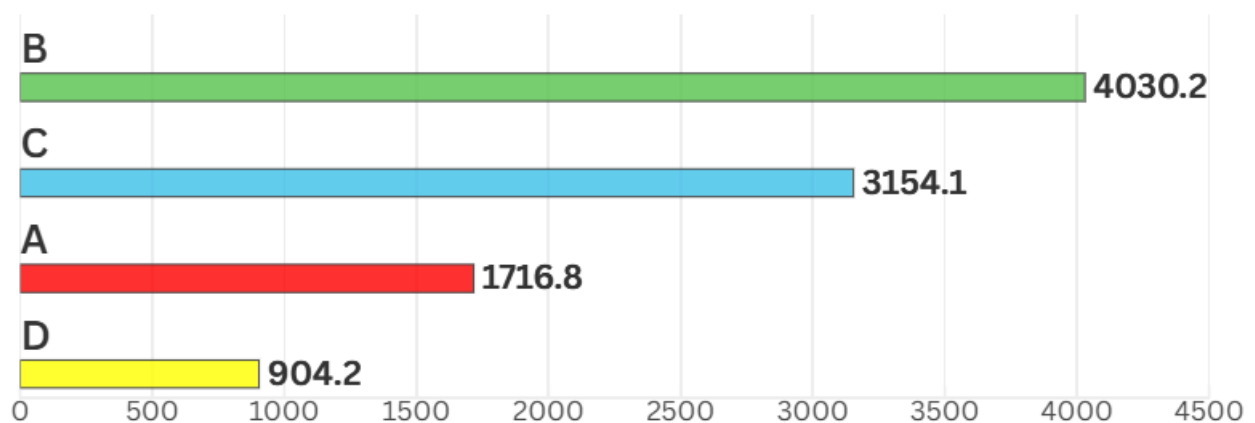
TOTAL TIME SPENT CYCLING

260 HOURS

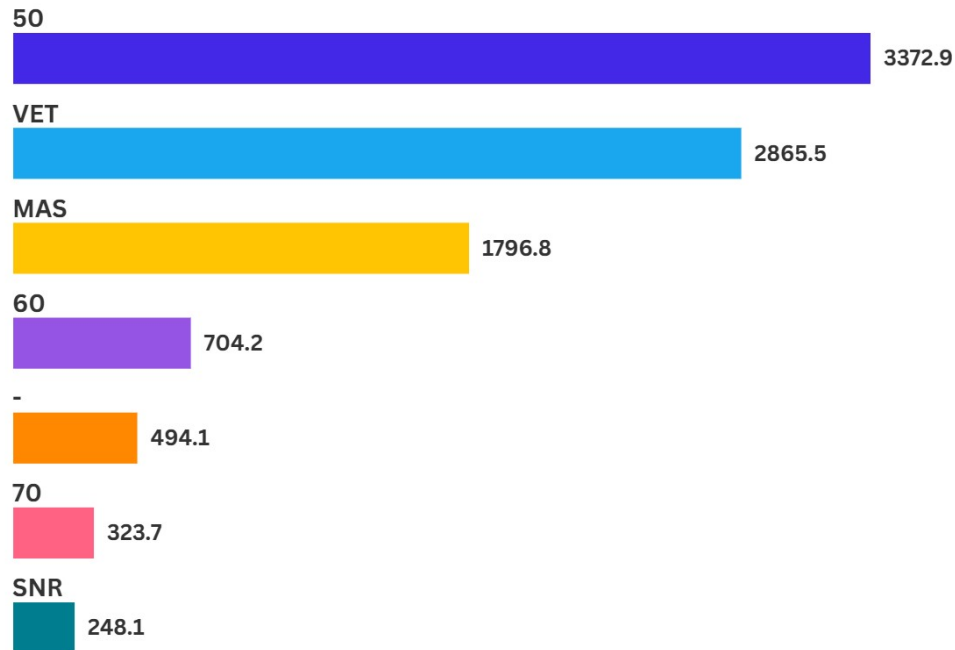
KM TRAVELLED BY SUBTEAM



KM TRAVELLED BY CATEGORY

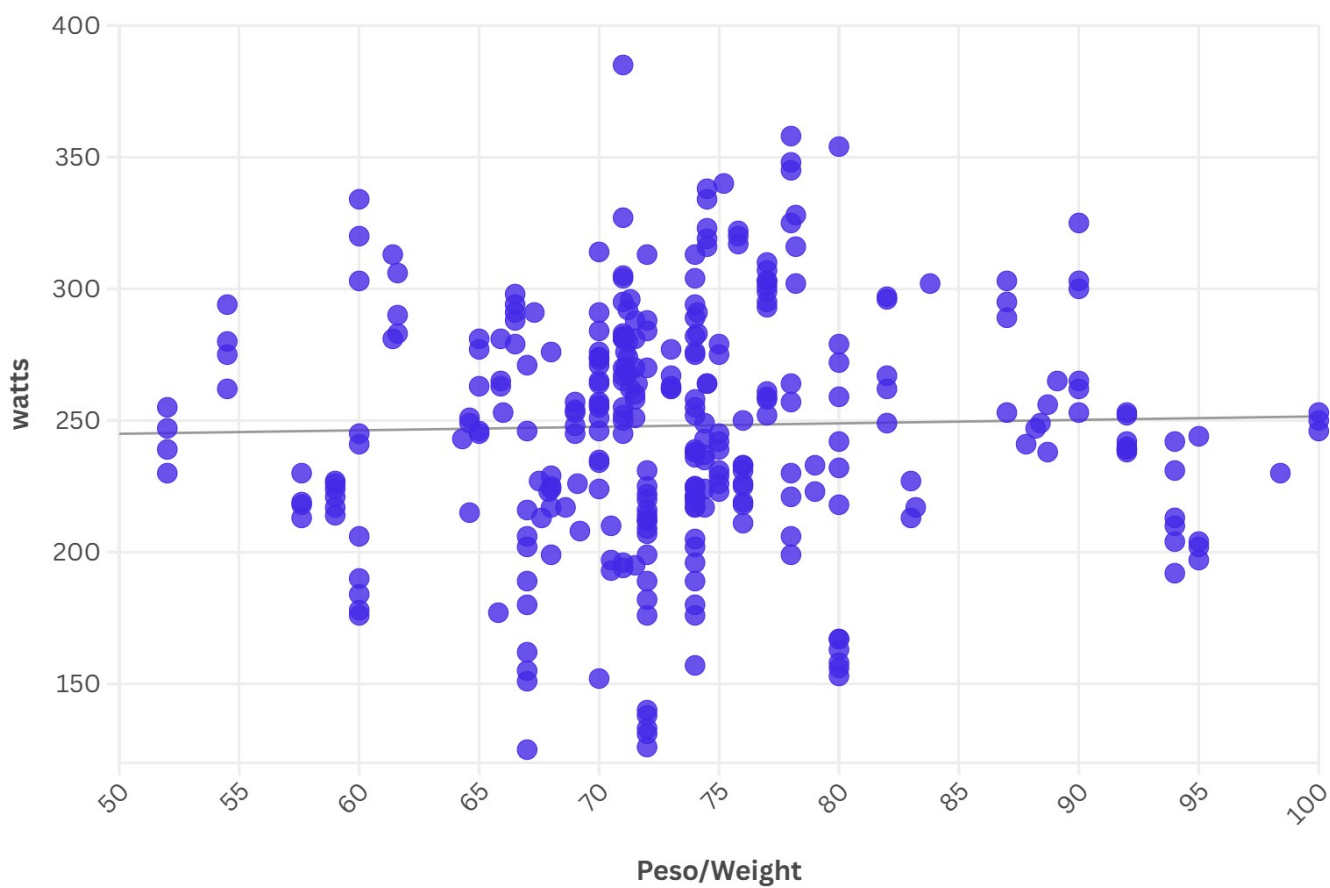
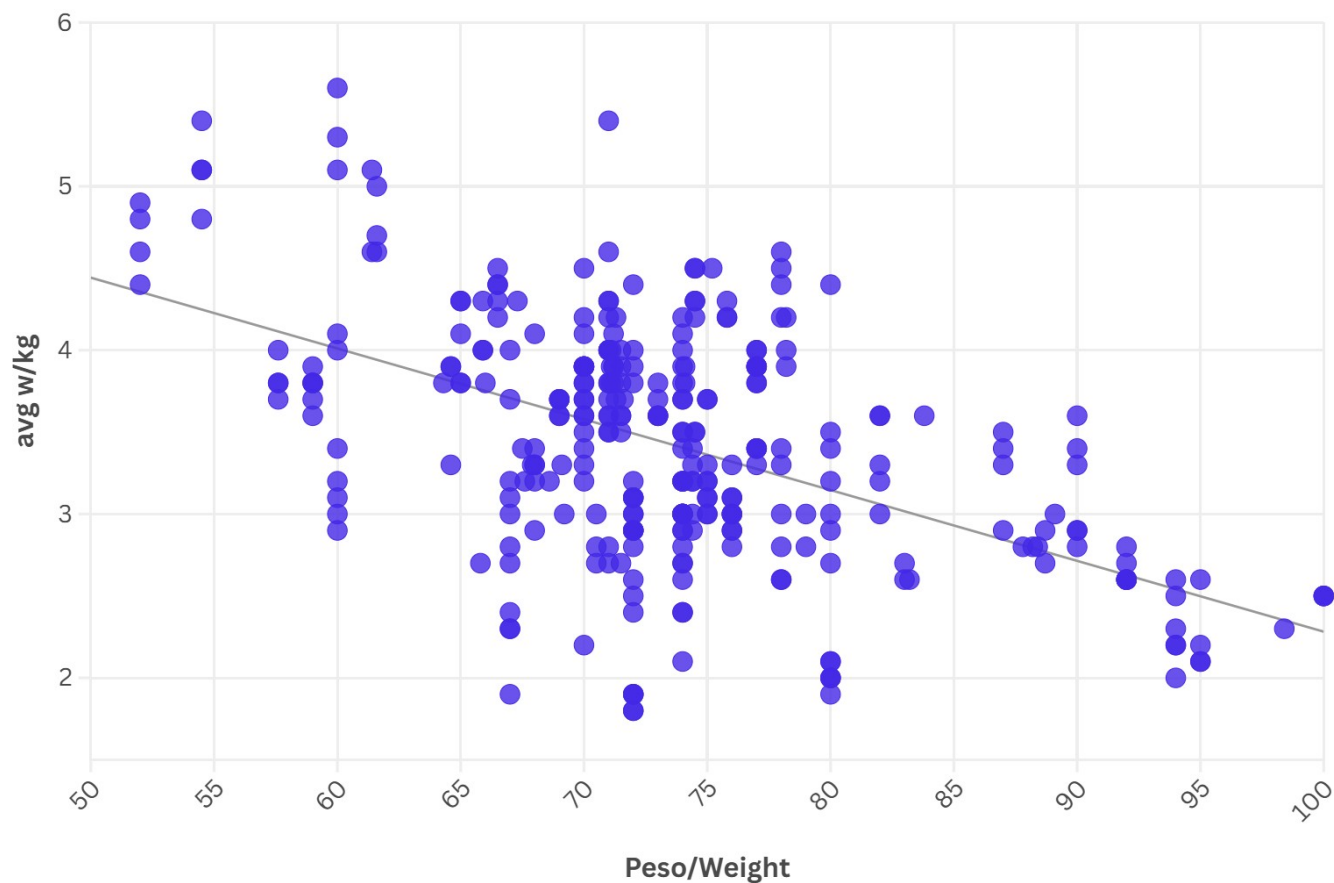


KM TRAVELLED BY AGE



Snr = Senior 23 to 29
Mas = Master 30 to 39
Vet = Veteran 40 to 49
- = not declared

BETTER LIGHT OR HEAVY?



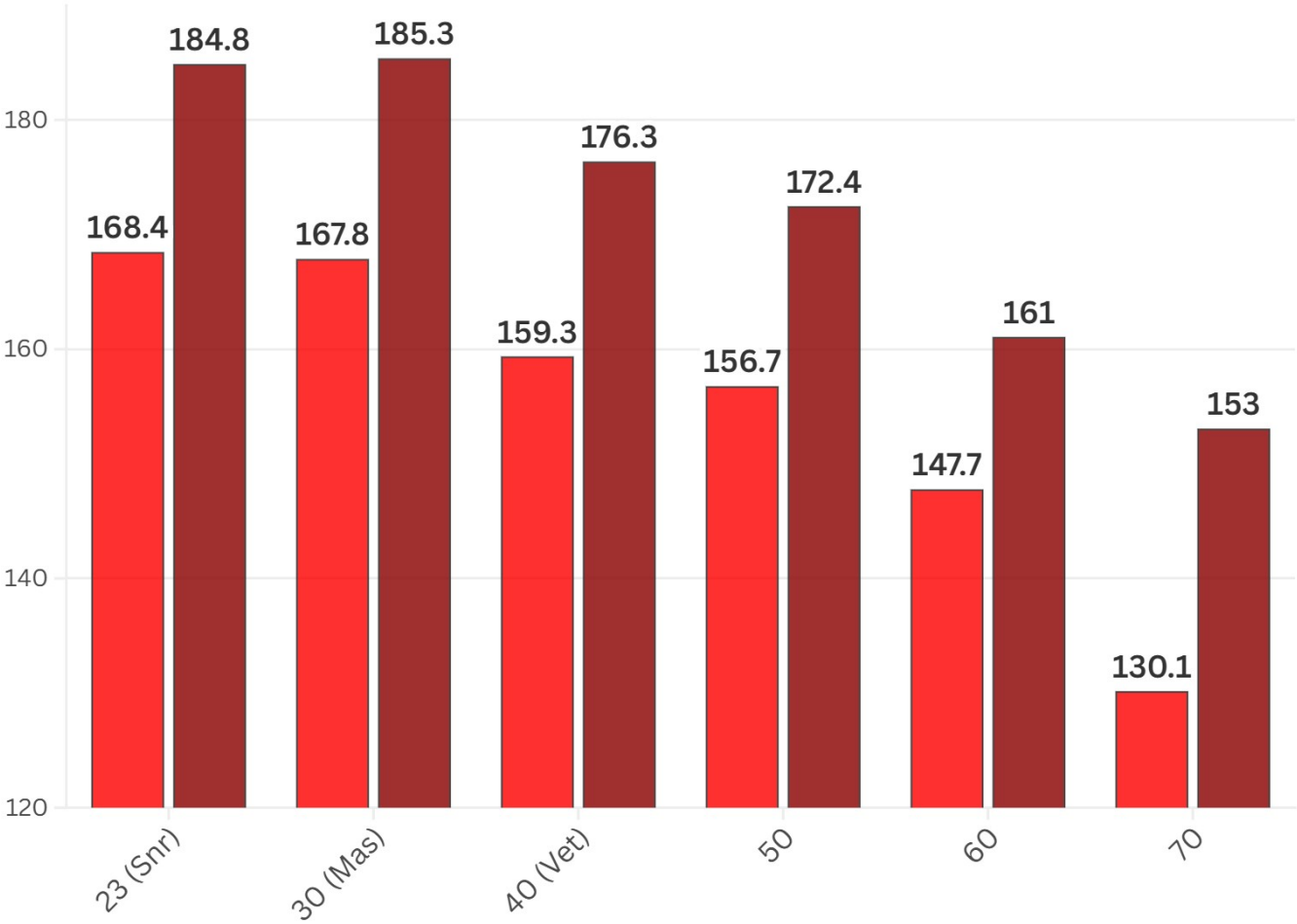
HEARTHBEATS EXPENDED FOR INOX

BATTITI CARDIACI SPESI PER INOX



2 319 388

AVG AND MAX HEARTHBEATS BY GROUP AGE



ENERGY PRODUCED BY INOX

227 407 KILOJOULES
(63.17 KWH)

ENERGY PRODUCED PER TEAM

